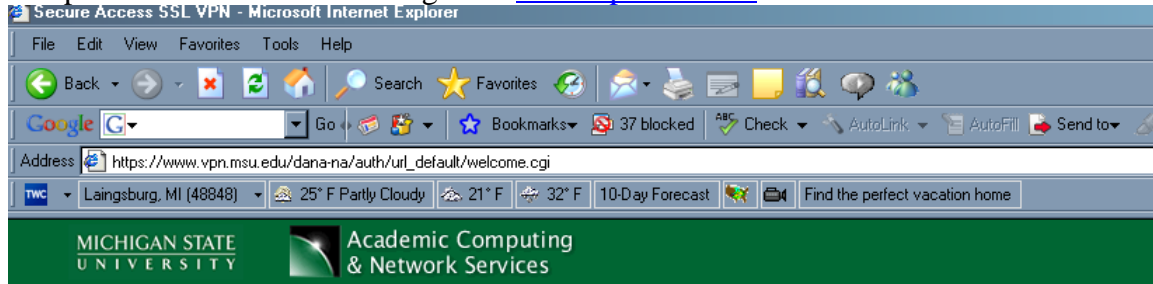


Mapping a network drive with the Campus VPN

1. Open a web browser and navigate to www.vpn.msu.edu



Welcome to the

Secure Access SSL VPN

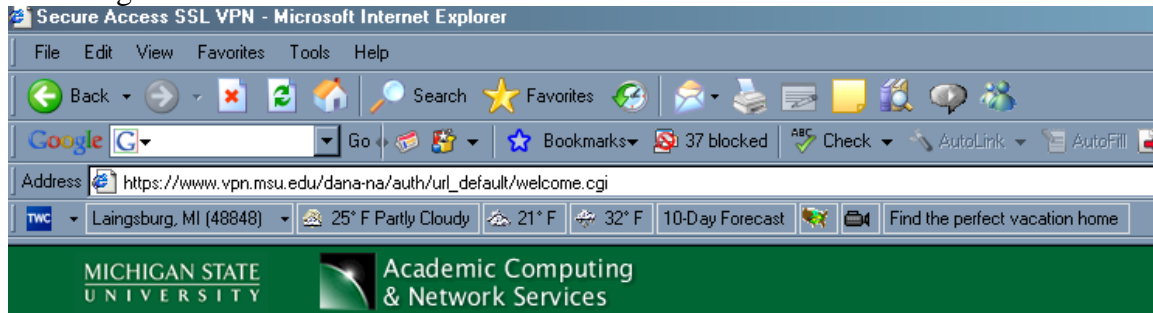
MSUnet ID

Please sign in to begin your secure session.

Password

2. Enter your MSU Net ID and password (this is not the same as your HIT username and password)

3. Hit Sign In



Welcome to the

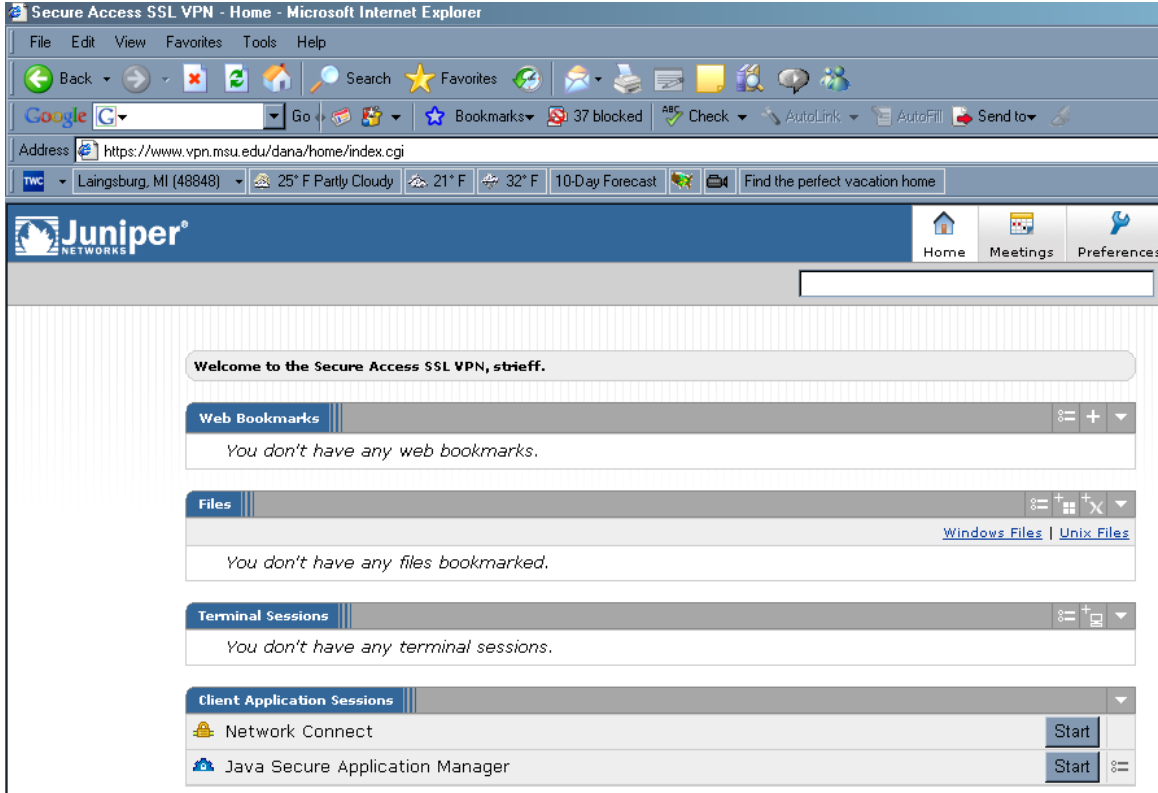
Secure Access SSL VPN

MSUnet ID

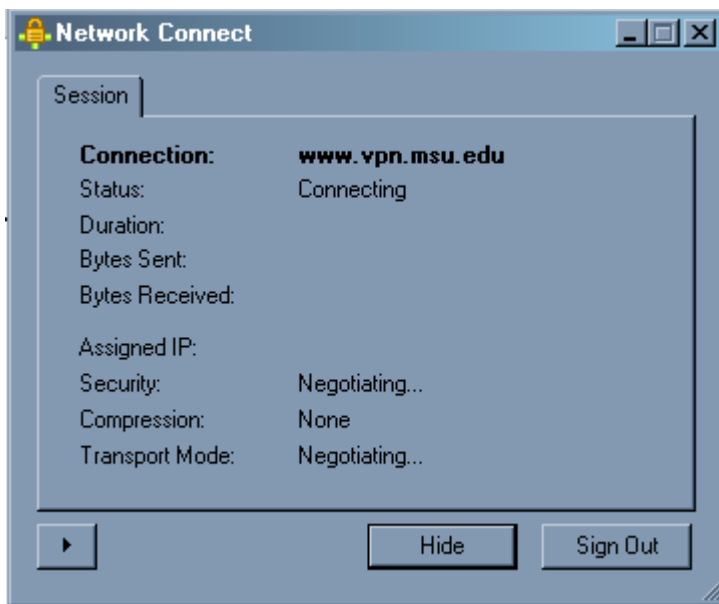
Please sign in to begin your secure session.

Password

4. Once logged in you will need to select Start next to the Network Connect Icon

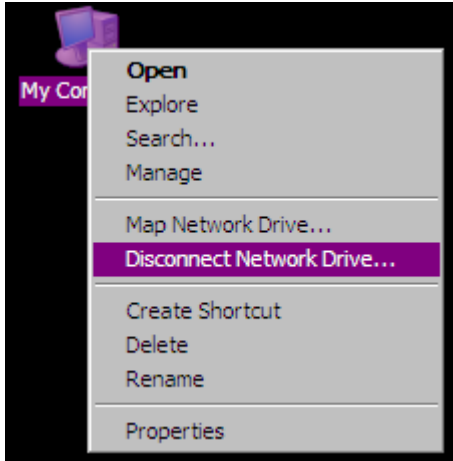


5. You should see this screen pop up momentarily and then it will minimize itself into your task bar.



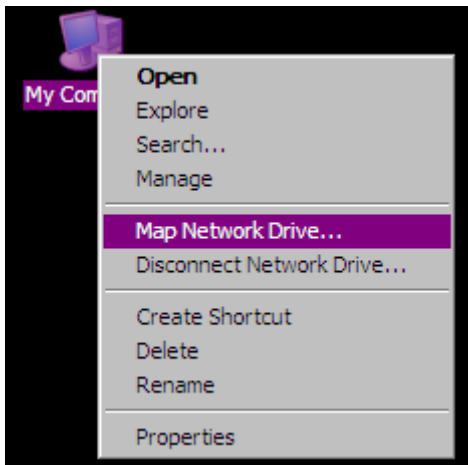
6. Now you are connected to the MSU VPN and we need to map your network drive.

7. “Right” click My Network Places or My Computer (either will do) and select Disconnect Network Drive

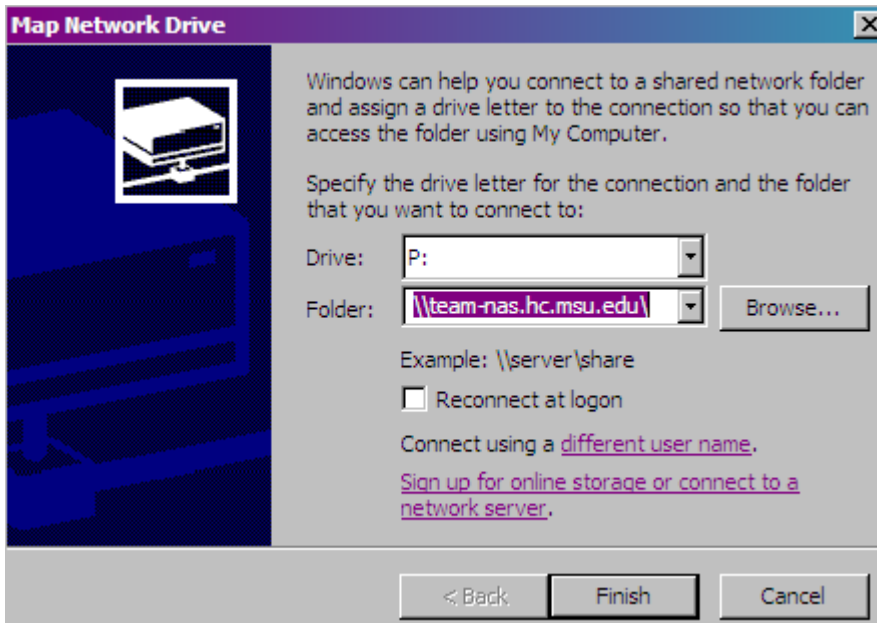


8. Choose any drive mapped to “\\35.9.86.4 OR \\team-user2.hc.msu.edu” and choose Disconnect. Close out of window once all drives are disconnected.

9. “Right” click My Network Places or My Computer (either will do) and select Map Network Drive



8. Choose any drive letter you'd like and type in the name of the server and share you'd like to connect to. In this case I will map my P drive from team-nas. Although the screen doesn't show it, the full path is [\\team-nas.hc.msu.edu\USERNAME](http://team-nas.hc.msu.edu)



9. Select Finish and if you are prompted for authentication please use our HIT username and password in the following format.



10. Once this is complete you should now see your P drive listed in My Computer.

Devices with Removable Storage



DVD/CD-RW Drive (D:)

Network Drives



striefij on 'team-user2.hc.msu.edu'
(F:)

